

»» A round-up of inspirational ideas that will motivate or indulge your guests

TEAM BUILDING



The Royal Academy of Dramatic Arts (RADA) has teamed up with event management company Inneventive to create a colourful array of tailored team-building packages. There are more than 40 experiences – available both in London and around the country – and they include re-enacting epic battle scenes from blockbusters such as *Star Wars*, creating flash mobs or making a music video. Another popular choice is scripting and starring in your own murder mystery dinner. Prices vary according to the activity. [»»inneventive.co.uk](http://inneventive.co.uk)

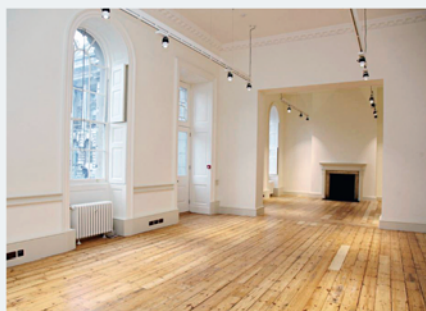
TEAM BUILDING



Teach your team how to become true leaders in Winston Churchill's World War II offices. The Churchill War Rooms in Westminster are where the former prime minister and his cabinet led the country to victory. For summer, the aptly named Leadership Package includes a talk by museum director Phil Reed, a three-course dinner followed by brandy and a chocolate cigar, and free entry to the museum. The package is priced at £149 per person. [»»iwm.org.uk](http://iwm.org.uk)

HOSPITALITY

Somerset House has introduced a corporate hospitality offer for its refurbished West Wing, in conjunction with its open-air cinema, the Film4 Summer Screen. During August the hospitality experience will be tailored exclusively for small numbers of guests, who can sample bespoke catering overlooking the Fountain Court before watching a film. From 1-21 August, corporates will also have access to the venue's Summer Screen Prints Exhibition, featuring 17 screen prints inspired by the films shown this year. [»»somersethouse.org.uk](http://somersethouse.org.uk)



TEAM BUILDING

The Wellcome Trust Conference Centre in Cambridge has partnered with Wildtracks, a local off-road activity park, to offer adrenaline-filled team-building packages. From archery to blindfolded 4x4 driving, this summer the venue plans to make full use of Grade II-listed Hinxton Hall's 100-acre grounds. The conference centre itself features a 300-seat auditorium and meeting rooms. A two-day package starts at £274 per person, or packages can be tailored. [»»wtconference.org.uk](http://wtconference.org.uk)



TEAM BUILDING



Keith Prowse and the Manchester Velodrome – home of GB cycling – are offering guests the chance to learn the art of indoor cycling. Teams of eight to ten people can compete to see their name and trial times on the big screen, and get a flavour of medal glory with a photo on the World Championship podium. If dates coincide, they might also see Team GB in training. Packages start at £199 per person for one hour, including a two-course buffet lunch. Additional services include Wattbike virtual racing and the chance to ride with a Team GB cyclist. [»»keithprorowse.co.uk](http://keithprorowse.co.uk)

TEAM BUILDING



With 2,000 acres of countryside at its disposal, Blenheim Palace has announced a country pursuits programme for groups in search of a team-building day out. Included in the programme is a mini Crufts session – where teams train with agility dogs and compete in timed courses – and ferret racing. Also on offer, at £180 per person, is a new summer package that includes breakfast, shooting in the morning followed by fishing on the impressive lake, and a luxury hamper filled with products from the estate's garden kitchen. [»»blenheimpalace.com](http://blenheimpalace.com)

If you have a corporate package, contact us at eventmagazine@haymarket.com